



500 HEAD SELL! ALL BREEDS

80th Anniversary

MEAD FARMS

**BULL & FEMALE
PRODUCTION SALE**

Noon • Saturday, May 7, 2022

Held at the Mead Sale Headquarters • Versailles, MO

GPS Address: 7785 Hwy 52, Versailles, MO 65084



Since 1942

Alan Mead (573) 216-0210
Jennifer Russell (573) 721-5512
21658 Quarry Lane
Barnett, MO 65011
Fax (573) 348-8325
Email: meadangus@yahoo.com

Dear Valued Customers and Friends,

We welcome you to our Spring 2022 All Breeds Production Sale. Mead Farms appreciates each and every one of you taking the time to look through this quality set of cattle. We value the continued trust in our program that our repeat customers show us. And we look forward to developing relationships with our new customers.

Since 1942, Mead Farms has made it a priority to develop cattle that can thrive on limited resources and excel at every facet of the beef industry, from pasture to plate. Throughout the years we have worked hard to create high quality cattle and stay true to our customers' needs. It is our belief that "Build great cows and the bulls will happen." Staying true to this statement has allowed us to be the leading Pathfinder herd in Missouri and one of the top Pathfinder herds in the nation for many years running.

The set of females that we are selling are our best offered to date. From the Lot 1 daughter of Magnitude's Mother to the top notch spring pairs offered, there are animals that will work in any herd in the nation. These females have been selected from the heart of our herd, one that has 7+ decades of maternal excellence. These females are developed to be fescue tolerant, easy fleshing and sound

The breeding age bull in this sale are the complete package, combining phenotype with performance and EPD excellence. Each bull has passed a comprehensive BSE by our veterinarian. Bulls are tested free of BVD persistent infection and will have a full round of vaccinations, as well as deworming and delicing. The bulls are hand fed in large contemporary groups, to ensure docility.

For the very first time Juliette and Annaliese are offering show heifers. These heifers are broke to lead and descend from heifers that the girls have shown successfully. Juliette has decided to focus on school this summer, thus we are able to offer these high quality heifers.

We are hoping to build relationships with each and every one of you. Now is the time to invest in some of the top genetics in the nation. Please don't hesitate to call us with any questions or assistance. We welcome you to stop by the farm for a tour.

See You May 7th!
Alan Mead
Juliette Mead
Annaliese Mead
Jennifer Russell



**All of the registered
Angus Bulls & Heifers have
GENOMIC ENHANCED EPDs**

Juliette and Annaliese at 2021 NJAS

MEAD FARMS BREEDING GUARANTEE

All bulls selling for \$3000 or more by Mead Farms are fertile to the best of our knowledge. Every bull has passed a complete breeding soundness exam by a licensed veterinarian.

If a bull is INJURED at any point during the first breeding season following the sale so to make that bull functionally unable to service and settle a cow, we will provide you with the following:

- 1). A satisfactory replacement if one is available.
- 2). Credit in a future Mead Farms Sale Equal to the purchase price less salvage value.

The "First Breeding Season" is defined as the first 90 days following the day of turn out. This is not a mortality insurance policy on your purchase. We suggest contacting an insurance representative to inquire about mortality insurance. Mead Farms will not replace an animal due to death, only when they are determined by a licensed veterinarian to be a non-breeder with the first Breeding Season. We do ask that you contact Alan Mead immediately upon discovering an injury and within the First Breeding Season time frame.

All Mead Farms Genetics sell under the Terms and Conditions of their respective Breed Associations. All settlements must be made prior to September 1, 2022.

SALE LOCATION

The Mead Sale Headquarters is located 4 miles West of Versailles, MO on Hwy 52 and on the north side of the road. GPS Address: 7785 Hwy 52, Versailles, MO 65084.

SALE DAY PHONES

Alan Mead (573) 216-0210
Jennifer Russell..... (573) 721-5512
Jerry Lehmann..... (573) 999-4759
Wes Tiemann (816) 244-4462
Brett Sayre (573) 881-1876

Adam Conover (816) 676-8560
Don Birk..... (417) 860-8595
Scott Wall..... (309) 212-5450
Jim Reed. (660) 527-3507

BREED REPRESENTATIVES

David Hobbs, American International Charolais Association (913) 515-1215
Joe Rickenbaugh, American Hereford Association (785) 633-3188
Harold Bertz, Red Angus Association of America (816) 661-2289
Adam Conover, American Angus Association (816) 676-8560
Julie Conover, Missouri Angus Association (734) 260-8635



Bulls that meet the Show-Me-Select criteria have the Show-Me-Select logo on their pedigree in this sale book.



The Targeting the Brand™ logo is designed to highlight registered Angus bulls with greater genetic potential to produce calves meeting the most challenging specifications of the Certified Angus Beef® brand. Bulls must meet genetic requirements of +0.65 Marbling EPD and +55 \$ Grid of non-parent Angus sires to qualify for use of the Targeting the Brand™ logo.

RETAINED INTEREST

Mead Farms retains a one-third semen and revenue sharing interest in all bulls selling. This simply means that if at any point in the life of the bull Mead Farms would like to collect semen on the bull for their own use, or if semen is marketed, Mead Farms will share in any of the revenue generated.

Buyers receive full possession and 100% salvage value on all bulls purchased.

DVAuction
Broadcasting Real-Time Auctions

Angus
Auctions.com

VIEW AND BID ONLINE!

We are pleased to bring you real-time Internet bidding and a live broadcast of this sale through Angus Auctions/DV Auctions. To watch and bid online, log in to www.angusauctions.com or www.dvauctions.com to create an account prior to the sale beginning. If you have questions or issues logging in prior to the sale beginning, please contact Suzy Harrison (573) 999-3197.

CHAROLAIS HEIFERS

90 MEAD U1125 OF 243P N1086

BD: 8-8-2020 Cow F1306570 Tattoo: U1125

LT LEDGER 0332 P
ACE-ORR LOCK N LOAD 243P
M836295 ORR'S MS PETUNIA 941P

LT BLUE VALUE 7903 ET
MEAD ESMIRELDA N1086
F1201275 MEAD ESMIRELDA J457

LT BLUEGRASS 4017 P
LT BRENDA 6120 PLD
ACE-ORR MAKERS MARK 689
ORR'S MS PETUNIA 0054 ET
LT BLUEGRASS 4017 P
LT UNLIMITED MAID 7184 P
LT EASY PRO 1158 PLD
MEAD ESMIRELDA F619 P

DAM'S PROD. RECORDS	
BR	6-95
WR	5-104
YR	2-94
IMF	2-102
REA	2-101

CED	BEPD	WEPD	YEPD	SC	MILK	CW	MARB	RE	TSI
+12.8	-3.2	+61	+106	+1.1	+25	+25	+0.29	+0.61	+252.64

- Lock N Load semen is very rare, take advantage of some of the very few daughters selling. Top 5% CED with top 2% Marb.
- U1125 was AI bred to Mead Bullseye T484 on 12/1/21 and Pasture Exposed to Mead Confidence Plus U011 from 12/5/21 to 2/14/22. Ultrasound estimates conception on 1/11/22.



Mead Lockstep, High Selling Charolais Bull to ST Genetics, Paternal Brother to Lots 90-92

91 MEAD U1176 OF 243 Q899

BD: 8-30-2020 Cow F1306642 Tattoo: U1176

LT LEDGER 0332 P
ACE-ORR LOCK N LOAD 243P
M836295 ORR'S MS PETUNIA 941P

WC BOOTLEGGERS 4017 P
MEAD Q899 OF 4017 N1047
F1238640 MEAD BRIAR N1047

LT BLUEGRASS 4017 P
LT BRENDA 6120 PLD
ACE-ORR MAKERS MARK 689
ORR'S MS PETUNIA 0054 ET
LT LONG DISTANCE 9001 PLD
WC RITA 1534 P
LT LONG DISTANCE 9001 PLD
MEAD BRIAR L957

DAM'S PROD. RECORDS	
BR	2-121
WR	2-98
YR	1-97
IMF	NA-NA
REA	NA-NA

CED	BEPD	WEPD	YEPD	SC	MILK	CW	MARB	RE	TSI
+8.8	-0.8	+59	+106	+1.0	+18	+19	+0.19	+0.61	+249.75

- Lock N Load daughter from Briar cow family.
- U1176 was AI bred to Kingsman 737 on 12/23/21. Ultrasound confirms AI date with a bull calf.

92 MEAD U1133 OF 243P N424

BD: 9-26-2020 Cow F1306573 Tattoo: U1133

LT LEDGER 0332 P
ACE-ORR LOCK N LOAD 243P
M836295 ORR'S MS PETUNIA 941P

LT LEDGER 0332 P
MEAD N424 OF M726
F1186725 MS MORRISON 726 POLLED

LT BLUEGRASS 4017 P
LT BRENDA 6120 PLD
ACE-ORR MAKERS MARK 689
ORR'S MS PETUNIA 0054 ET
LT BLUEGRASS 4017 P
LT BRENDA 6120 PLD
MORRISON'S HILLCREST MAC
MORRISON'S WY WIND 421 P

DAM'S PROD. RECORDS	
BR	3-126
WR	3-93
YR	1-110
IMF	1-127
REA	1-97

CED	BEPD	WEPD	YEPD	SC	MILK	CW	MARB	RE	TSI
+7.0	+0.1	+55	+113	+1.5	+17	+31	+0.29	+0.70	+261.05

- U1133 has top 2% Marb and top 7% Scrotal EPDs, as well as top 15% CW and top 20% TSI.
- U1133 was bred 3/28/22 to Mead Bullseye T484 and Pasture Exposed to Mead National V843 from 4/1/22 through sale day.



Active Dams Spring 2022 Breed Averages

CED	BW	WW	YW	Milk	MCE	MTL	SC	CW	RE	Fat	Marb	TSI
+5.4	0.0	+54.1	+97.4	+21.6	+5.4	+48.7	+0.8	+18.2	+0.67	+0.006	+0.09	+239.99

CHAROLAIS HEIFERS

93 MEAD U301 OF 417 Q607

BD: 11-16-2019	Cow F1297004	Tattoo: U301
LT RUSHMORE 8060 PLD	LT RIO BRAVO 3181 P	
CCC WC RESOURCE 417 P	LT BRENDA'S EASE 3055PLD	
M846721 WC CCC BLUE GIRL 1528 P	LT BLUE VALUE 7903 ET	
	CCC BAD GIRLFRIEND U146 P ET	
MEAD GRID MAKER L419	M6 GRID MAKER 104 PET	
MEAD MISS Q607	MEAD PAMELA H011P	
F1223655 MEAD MS M415	MEAD EASY PRO J863	
	MEAD MS GRIDMAKER K175	

CED	BEPD	WEPD	YEPD	SC	MILK	CW	MARB	RE	TSI
+6.3	-0.3	+53	+96	+0.6	+31	+18	+0.18	+0.88	+241.44

- Lead off Resource daughter with top 10% Milk and RE EPDs.
- Sells bred to Connealy Plus 5613 with calf due 8/23/22.

97 MEAD U1138 OF 417 P574

BD: 8-10-2020	Cow F1306624	Tattoo: U1138
LT RUSHMORE 8060 PLD	LT RIO BRAVO 3181 P	
CCC WC RESOURCE 417 P	LT BRENDA'S EASE 3055PLD	
M846721 WC CCC BLUE GIRL 1528 P	LT BLUE VALUE 7903 ET	
	CCC BAD GIRLFRIEND U146 P ET	
LT LEDGER 0332 P	LT BLUEGRASS 4017 P	
MEAD MS IMPRESSIVE P574 TW P	LT BRENDA 6120 PLD	
F1219409 MEAD MS IMPRESSIVE L453	BALDRIDGE FASTTRACK 82F	
	MEAD MS IMPRESSIVE J149	

CED	BEPD	WEPD	YEPD	SC	MILK	CW	MARB	RE	TSI
+10.5	-2.9	+59	+103	+0.8	+23	+26	+0.22	+0.77	+247.69

- Lot 96 - 98 are 3/4 sisters carrying a calf out of the same sire. Consistency is one of the best ways to improve the bottom line, these sisters allow this consistency.
- Lot 97 is bred to Mead National U3019. Ultrasound estimates conception on 1/6/22 with a heifer calf.

94 MEAD U1177 OF 417 Q921

BD: 8-15-2020	Cow F1306643	Tattoo: U1177
LT RUSHMORE 8060 PLD	LT RIO BRAVO 3181 P	
CCC WC RESOURCE 417 P	LT BRENDA'S EASE 3055PLD	
M846721 WC CCC BLUE GIRL 1528 P	LT BLUE VALUE 7903 ET	
	CCC BAD GIRLFRIEND U146 P ET	
WC BOOTLEGGERS 4017 P	LT LONG DISTANCE 9001 PLD	
MEAD EXODUS Q921	WC RITA 1534 P	
F1238643 MEAD EXODUS N1096	LT LEDGER 0332 P	
	MEAD EXODUS K566	

CED	BEPD	WEPD	YEPD	SC	MILK	CW	MARB	RE	TSI
+11.7	-3.2	+53	+91	+0.5	+23	+15	+0.31	+0.71	+240.53

- Calving ease standout with top 2% Marb EPD. Resource daughters are proving to be highly functional momma cows.
- U1177 was AI bred to Mead Bullseye T484 on 3/28/22 and Pasture Exposed to Mead National V843.

98 MEAD U1171 OF 417 Q852

BD: 8-16-2020	Cow F1306640	Tattoo: U1171
LT RUSHMORE 8060 PLD	LT RIO BRAVO 3181 P	
CCC WC RESOURCE 417 P	LT BRENDA'S EASE 3055PLD	
M846721 WC CCC BLUE GIRL 1528 P	LT BLUE VALUE 7903 ET	
	CCC BAD GIRLFRIEND U146 P ET	
LT LEDGER 0332 P	LT BLUEGRASS 4017 P	
MEAD MS Q852	LT BRENDA 6120 PLD	
F1238635 MEAD MS M417	BALDRIDGE FASTTRACK 82F	
	MEAD MS GRIDMAKER K182	

CED	BEPD	WEPD	YEPD	SC	MILK	CW	MARB	RE	TSI
+7.3	-0.8	+65	+108	+0.7	+27	+22	+0.24	+0.78	+250.09

- These Resource daughters are high in Marbling traits, bred to a black bull the resulting calves will be highly sought after by feeders and cow calf operators alike.
- Lot 98 is bred to Mead National U3019. Ultrasound estimates conception on 1/26/22.

95 MEAD U1123 OF 417 N1082

BD: 8-14-2020	Cow RF714162	Tattoo: U1123
LT RUSHMORE 8060 PLD	LT RIO BRAVO 3181 P	
CCC WC RESOURCE 417 P	LT BRENDA'S EASE 3055PLD	
M846721 WC CCC BLUE GIRL 1528 P	LT BLUE VALUE 7903 ET	
	CCC BAD GIRLFRIEND U146 P ET	
LT LEDGER 0332 P	LT BLUEGRASS 4017 P	
MEAD MS LEDGER N1082	LT BRENDA 6120 PLD	
RF708225 MEAD MS DUKE I670	MEAD COMBINATION F484	
	MF ESMIRELDA E525 P	

CED	BEPD	WEPD	YEPD	SC	MILK	CW	MARB	RE	TSI
+5.8	-2.5	+47	+84	+0.7	+22	+18	+0.19	+0.59	+230.05

- U1123 was Pasture Exposed to Connealy Republic from 1/1/22 to 2/14/22. Ultrasound estimates conception on 1/31/22.

99 MEAD U1158 OF 5223 Q777

BD: 8-4-2020	Cow F1306635	Tattoo: U1158
WC BENELLI 2134 P ET	DA PASSPORT 502 P ET	
WC MILESTONE 5223 P	JWK CLARICE J139 ET	
M865273 WC LADY BLUE 0506 P	LT BLUE VALUE 7903 ET	
	DS MISS FAB MACK P ET	
WC BOOTLEGGERS 4017 P	LT LONG DISTANCE 9001 PLD	
MEAD MS IMPRESSIVE Q777	WC RITA 1534 P	
F1238619 MEAD MS IMPRESSIVE N405	LT LEDGER 0332 P	
	MF MS IMPRESSIVE E201	

CED	BEPD	WEPD	YEPD	SC	MILK	CW	MARB	RE	TSI
+6.8	-0.1	+60	+107	+0.8	+22	+18	+0.16	+0.77	+250.40

- Milestone x Bootlegger combination has been very popular in both our bull sales and pastures.
- U1158 was Pasture Exposed to Mead National U3019 from 12/1/21 to 2/14/22. Ultrasound estimates conception on 12/22/21 with a bull calf.

96 MEAD U1127 OF 417 N1095

BD: 8-13-2020	Cow F1306571	Tattoo: U1127
LT RUSHMORE 8060 PLD	LT RIO BRAVO 3181 P	
CCC WC RESOURCE 417 P	LT BRENDA'S EASE 3055PLD	
M846721 WC CCC BLUE GIRL 1528 P	LT BLUE VALUE 7903 ET	
	CCC BAD GIRLFRIEND U146 P ET	
LT LEDGER 0332 P	LT BLUEGRASS 4017 P	
MEAD LADY KLONDIKE M1095	LT BRENDA 6120 PLD	
F1201281 MEAD LADY KLONDIKE K531	LT EASY PRO 1158 PLD	
	MEAD LADY KLONDIKE I602	

CED	BEPD	WEPD	YEPD	SC	MILK	CW	MARB	RE	TSI
+8.2	-1.6	+66	+107	+0.9	+29	+24	+0.32	+0.87	+251.57

- Performance, maternal and carcass excellence. Top 15% Milk, top 15% RE, top 2% Marb, top 20% WW.
- U1127 was Pasture Exposed to Mead National U3019 from 12/5/21 to 2/14/22. Ultrasound estimates conception on 12/17/21 with a heifer calf.

100 MEAD U1112 OF 5223 M704

BD: 9-30-2020	Cow F1306565	Tattoo: U1112
WC BENELLI 2134 P ET	DA PASSPORT 502 P ET	
WC MILESTONE 5223 P	JWK CLARICE J139 ET	
M865273 WC LADY BLUE 0506 P	LT BLUE VALUE 7903 ET	
	DS MISS FAB MACK P ET	
SMR WALDORF 83W PLD	FARAWAY CHICO 4T PLD ET	
MEAD MISS CROCUS M704	FARAWAY MS SUPREME 235 PLD ET	
F1182212 MEAD MSS CROCUS G511 P	LT UNLIMITED EASE 9108	
	MF MISS CROCUS E518 P	

CED	BEPD	WEPD	YEPD	SC	MILK	CW	MARB	RE	TSI
-1.3	+3.7	+62	+106	+0.9	+26	+17	+0.07	+0.84	+243.94

- U1112 was AI bred to Mead Bullseye T484 on 12/23/21 and Pasture Exposed to Connealy Republic from 1/1/22 to 2/14/22. Ultrasound confirms AI date with a heifer calf.

Active Dams Spring 2022 Breed Averages

CED	BW	WW	YW	Milk	MCE	MTL	SC	CW	RE	Fat	Marb	TSI
+5.4	0.0	+54.1	+97.4	+21.6	+5.4	+48.7	+0.8	+18.2	+0.67	+0.006	+0.09	+239.99

CHAROLAIS HEIFERS

101 MEAD U1189 OF 5223 R044

BD: 8-6-2020 Cow F1306645 Tattoo: U1189
WC BENELLI 2134 P ET
WC MILESTONE 5223 P
M865273 WC LADY BLUE 0506 P
MEAD BANKER N399
MEAD ESMERELDA R044
F1242093 MEAD ESMERELDA M393

CED	BEPD	WEPD	YEPD	SC	MILK	CW	MARB	RE	TSI
+6.4	-0.5	+59	+108	+0.8	+20	+21	+0.14	+0.81	+252.64

DAM'S PROD. RECORDS
BR 2-114
WR 2-90
YR 1-95
IMF NA-NA
REA NA-NA

- Milestone daughter from a Banker dam.
- Lot 101 was Pasture Exposed to Mead National U3019 from 12/20/21 to 2/14/22. Ultrasound estimates conception on 12/22/21 with a bull calf.

105 MEAD U1198 OF 72296 R1703

BD: 8-22-2020 Cow F1306650 Tattoo: U1198
LHD CHOTEAU B1669 P
LT AUTHORITY 7229 PLD
M898189 LT KATY 4273 PLD
LT BLUE VALUE 7903 ET
MEAD R1703 OF 7903 M839
F1261052 MEAD ACTRESS M839

CED	BEPD	WEPD	YEPD	SC	MILK	CW	MARB	RE	TSI
+10.4	-2.8	+32	+65	+1.1	+18	+10	+0.18	+0.59	+216.41

DAM'S PROD. RECORDS
BR 2-92
WR 2-80
YR 1-87
IMF NA-NA
REA NA-NA

- Authority daughter with elite CED. U1198 was bred to Mead LCC Bullseye T484 on 3/28/22 and Pasture Exposed to Mead National V843.

102 MEAD U1205 OF 5223 R409

BD: 8-11-2020 Cow F1306652 Tattoo: U1205
WC BENELLI 2134 P ET
WC MILESTONE 5223 P
M865273 WC LADY BLUE 0506 P
LT RUSHMORE 8060 PLD
MEAD R1704 OF 8060 M390
F1261061 MEAD MS M390

CED	BEPD	WEPD	YEPD	SC	MILK	CW	MARB	RE	TSI
+5.8	-0.2	+51	+96	+0.9	+25	+20	+0.14	+0.73	+241.91

DAM'S PROD. RECORDS
BR 2-116
WR 2-86
YR 1-90
IMF NA-NA
REA NA-NA

- U1205 was bred to Mead LCC Bullseye T484 on 3/28/22 and Pasture Exposed to Mead National V843 from 4/1/22 through sale day.

106 MEAD U1236 OF 6221 S1746

BD: 8-21-2020 Cow F1306725 Tattoo: U1236
LT RUSHMORE 8060 PLD
LT AFFINITY 6221 PLD
M880381 LT ATHENA 1247
WC BOOTLEGGER 4017 P
MEAD S1746 OF 4017 Q746
F1271998 MEAD MS PRO Q746

CED	BEPD	WEPD	YEPD	SC	MILK	CW	MARB	RE	TSI
+12.1	-4.0	+58	+100	+0.6	+27	+10	+0.28	+0.53	+248.28

DAM'S PROD. RECORDS
BR 1-99
WR 1-106
YR 1-104
IMF NA-NA
REA NA-NA

- Affinity daughter with top 3% Marb and double digit CED. Lot 106 was Pasture Exposed to Mead Confidence Plus U011 from 12/20/21 to 2/14/22. Ultrasound estimates conception on 12/27/21.

103 MEAD U1234 OF 8060 S1739

BD: 8-30-2020 Cow F1306724 Tattoo: U1234
LT RIO BRAVO 3181 P
LT RUSHMORE 8060 PLD
M760665 LT BRENDA'S EASE 3055 PLD
WC BOOTLEGGER 4017 P
MEAD S1739 OF 4017 Q1005
F1276895 MEAD ESMIRELDA Q1005

CED	BEPD	WEPD	YEPD	SC	MILK	CW	MARB	RE	TSI
+11.2	-2.4	+62	+107	+0.9	+35	+16	+0.18	+0.59	+249.34

DAM'S PROD. RECORDS
BR 1-108
WR 1-109
YR 1-105
IMF NA-NA
REA NA-NA

- Rushmore daughter with top 2% Milk and top 10% CED and 20% Marb. The Rushmore sons and daughters have been very popular through the years for their maternal and performance excellence.
- U1234 was AI bred on 12/23/21 to Mead LCC Bullseye T484 and Pasture Exposed to Connealy Republic from 1/1/22 to 2/14/22. Ultrasound confirms AI date with a heifer calf.

107 MEAD U1213 OF 6221 S1659

BD: 8-19-2020 Cow F1306718 Tattoo: U1213
LT RUSHMORE 8060 PLD
LT AFFINITY 6221 PLD
M880381 LT ATHENA 1247
WC BOOTLEGGER 4017 P
MEAD S1659 OF 4017 Q1084
F1272692 MEAD MS PRO Q1084

CED	BEPD	WEPD	YEPD	SC	MILK	CW	MARB	RE	TSI
+14.6	-5.3	+45	+88	+0.6	+25	+9	+0.23	+0.53	+241.63

DAM'S PROD. RECORDS
BR 1-99
WR 1-119
YR 1-103
IMF 1-84
REA 1-107

- Use these Affinity daughters in a commercial or seedstock herd. They have elite Marb EPDs and calving ease built in. U1213 was Pasture Exposed to Mead Confidence Plus U011 from 12/20/21 to 2/14/22. Ultrasound estimates conception on 12/20/21 with a bull calf.

104 MEAD U1117 OF 7229 N1047

BD: 8-19-2020 Cow F1306666 Tattoo: U1117
LHD CHOTEAU B1669 P
LT AUTHORITY 7229 PLD
M898189 LT KATY 4273 PLD
LT LONG DISTANCE 9001 PLD
MEAD BRIAR N1047
F1201291 MEAD BRIAR L957

CED	BEPD	WEPD	YEPD	SC	MILK	CW	MARB	RE	TSI
+6.3	-1.1	+42	+71	+0.7	+19	-2	+0.09	+0.43	+214.29

DAM'S PROD. RECORDS
BR 4-102
WR 4-91
YR 1-88
IMF 1-103
REA 1-89

- U1117 was AI bred to LT Rushmore 8060 on 11/28/21 and Pasture Exposed to Mead National U3019 from 12/5/21 to 2/14/21. Ultrasound confirms AI date.



Active Dams Spring 2022 Breed Averages

CED	BW	WW	YW	Milk	MCE	MTL	SC	CW	RE	Fat	Marb	TSI
+5.4	0.0	+54.1	+97.4	+21.6	+5.4	+48.7	+0.8	+18.2	+0.67	+0.006	+0.09	+239.99

FALL BRED COWS CHAROLAIS

214 MEAD T467 OF 3044 P273

BD: 12-2-2018	Cow F1275098	Tattoo: T467
LT RUSHMORE 8060 PLD	LT RIO BRAVO 3181 P	
WC TOTAL RUSH 3044 P	LT BRENDA'S EASE 3055PLD	
M832388 WC QUEEN 1120 P	LT STAGECOACH 8068 PLD	
	LT EASY QUEEN 7067 P	
LT LEDGER 0332 P	LT BLUEGRASS 4017 P	
MEAD MS IMPRESSIVE P273 TW	LT BRENDA 6120 PLD	
F1205406 MEAD MS IMPRESSIVE J149	M6 GAIN & GRADE 927 PLD	
	MF MS IMPRESSIVE B221	

CED	BEPD	WEPD	YEPD	SC	MILK	CW	MARB	RE	TSI
+4.3	-1	+62	+109	+1.4	+28	+25	+0.14	+0.59	+248.63

- Total Rush daughter raised by a proven Ledger daughter. Balanced EPD profile with WW, YW, Milk, MTL, SC & CW in the top 20% or better.
- T467 is AI bred to the new ST sire, Mead Lockstep, acquired in the Fall 2021 sale as the top-selling Charolais. Service date of 11/16/21.

DAM'S PROD. RECORDS
BR 5-110
WR 5-104
YR 3-105
IMF 3-97
REA 3-95

218 MEAD T1005 OF 227 M616

BD: 8-20-2019	Cow F1290181	Tattoo: T1005
M6 FRESH AIR 8165 P	THREE TREES WIND 0383 ET	
M6 COMFORT ZONE 227 P	SR LADY EASE 914 ET	
M822899 M6 MS 104 DUKE 540 P	M6 GRID MAKER 104 PET	
	M6 MS DUKE 9497 PET	
LT LONG DISTANCE 9001 PLD	LT SILVER DISTANCE 5342P	
MEAD LADY KLONDIKE M616	LT BELLE 7026 P	
F1182224 MEAD LADY KLONDIKE K613	SMR WALDORF 83W PLD	
	MEAD LADY KLONDIKE H722	

CED	BEPD	WEPD	YEPD	SC	MILK	CW	MARB	RE	TSI
+10.9	-2.3	+43	+88	+0.1	+29	+6	+0.16	+0.71	+240.03

- 3/4 sister to Lot 217.
- T1005 was AI to JMAR Hosea 2M70 on 11/9/21 and Pasture Exposed to Mead LCC Bullsseye T484 from 11/20/21 to 2/14/22. Ultrasound estimates conception on 12/20/21.

DAM'S PROD. RECORDS
BR 6-104
WR 5-103
YR 3-111
IMF 2-97
REA 2-108

215 MEAD T1052 OF 3044 P1303

BD: 8-31-2019	Cow F1290387	Tattoo: T1052
LT RUSHMORE 8060 PLD	LT RIO BRAVO 3181 P	
WC TOTAL RUSH 3044 P	LT BRENDA'S EASE 3055PLD	
M832388 WC QUEEN 1120 P	LT STAGECOACH 8068 PLD	
	LT EASY QUEEN 7067 P	
LT LEDGER 0332 P	LT BLUEGRASS 4017 P	
MEAD MS P1303 P	LT BRENDA 6120 PLD	
F1219419 MEAD MS L916	LT BLUE VALUE 7903 ET	
	MF MS C557 P	

CED	BEPD	WEPD	YEPD	SC	MILK	CW	MARB	RE	TSI
+7.2	-1.1	+60	+104	+1.4	+28	+18	+0.15	+0.59	+243.52

- 3/4 sister to Lot 214. Take a set of these young, closely related Charolais cows in either a purebred or commercial operation.
- Lot 215 was AI bred to WCC Milestone on 11/9/21 and Pasture Exposed to Mead LCC Bullsseye T484. Ultrasound confirms AI date.

DAM'S PROD. RECORDS
BR 3-109
WR 3-103
YR 2-100
IMF 2-78
REA 2-97

219 MEAD T1081 OF 5223 M736

BD: 8-20-2019	Cow F1290186	Tattoo: T1081
WC BENELLI 2134 P ET	DA PASSPORT 502 P ET	
WC MILESTONE 5223 P	JWK CLARICE J139 ET	
M865273 WC LADY BLUE 0506	LT BLUE VALUE 7903 ET	
	DS MISS FAB MACK P ET	
LT EASY PRO 1158 PLD	LT UNLIMITED EASE 9108	
MEAD MISS CROCUS M736	LT LADY MACBETH 8413 ETP	
F1182365 MEAD MISS CROCUS H746	JWK ELIXIR H011 ET	
	MEAD MISS CROCUS F613 P	

CED	BEPD	WEPD	YEPD	SC	MILK	CW	MARB	RE	TSI
+7.3	-0.5	+66	+107	+0.5	+32	+18	+0.21	+0.63	+247.83

- High growth and High maternal cow with top 10% Marb. We strive to produce bulls and cows that excel in many traits.
- T1081 was AI to JMAR Hosea 2M70 on 11/9/21 and Pasture Exposed to Mead LCC Bullsseye T484 from 11/20/21 to 2/14/22. Ultrasound estimates conception on 12/20/21.

DAM'S PROD. RECORDS
BR 5-98
WR 5-105
YR 2-99
IMF 2-118
REA 2-92

216 MEAD T355 OF 227 R011

BD: 11-29-2018	Cow F1275112	Tattoo: T355
M6 FRESH AIR 8165 P	THREE TREES WIND 0383 ET	
M6 COMFORT ZONE 227 P	SR LADY EASE 914 ET	
M822899 M6 MS 104 DUKE 540 P	M6 GRID MAKER 104 PET	
	M6 MS DUKE 9497 PET	
LT BLUE VALUE 7903 ET	LT BLUEGRASS 4017 P	
MEAD MS BLUE VALUE R011	LT UNLIMITED MAID 7184 P	
F1241955 MEAD MS CROCUS I063	BALDRIDGE KOJACK 29K	
	MEAD MISS CROCUS F091 P	

CED	BEPD	WEPD	YEPD	SC	MILK	CW	MARB	RE	TSI
+9.7	-1.2	+35	+75	+0.3	+23	+9	+0.22	+0.58	+227.14

- Comfort Zone daughter with built in CED and Marb.
- AI bred to Mead Lockstep U1113 on 11/15/21 and Pasture Exposed to Mead Stunner U1798 from 11/20/21 to 2/14/22. Ultrasound confirms AI date.

DAM'S PROD. RECORDS
BR 1-104
WR 1-83
YR NA-NA
IMF NA-NA
REA NA-NA

220 MEAD T1018 OF 417 N1085

BD: 8-22-2019	Cow F1290238	Tattoo: T1018
LT RUSHMORE 8060 PLD	LT RIO BRAVO 3181 P	
CCC WC RESOURCE 417 P	LT BRENDA'S EASE 3055PLD	
M846721 WC CCC BLUE GIRL 1528 P	LT BLUE VALUE 7903 ET	
	CCC BAD GIRLFRIEND U146 P ET	
SMR WALDORF 83W PLD	FARAWAY CHICO 4T PLD ET	
MEAD MS IMPRESSIVE N1085 TW	FARAWAY MS SUPREME 23S PLD ET	
F1201274 MEAD MS IMPRESSIVE J299	MEAD ELIMINATOR G162 P	
	LDL MISS IMPRESS L850 P	

CED	BEPD	WEPD	YEPD	SC	MILK	CW	MARB	RE	TSI
-0.5	+2.7	+68	+107	+0.5	+30	+20	+0.16	+0.79	+242.02

- Resource progeny are known to be heavy muscled, attractive cattle that work in many environments. Top 6% WW with top 15% Milk.
- T1018 AI bred to DC/CRJ Tank E108 P on 11/08/21 and Pasture Exposed to Mead Enhance U1814 from 11/20/21 to 2/14/22. Ultrasound estimates conception on 1/31/22.

DAM'S PROD. RECORDS
BR 4-115
WR 4-105
YR 1-100
IMF 1-88
REA 1-95

217 MEAD T1107 OF 227 M621

BD: 8-23-2019	Cow F1290183	Tattoo: T1107
M6 FRESH AIR 8165 P	THREE TREES WIND 0383 ET	
M6 COMFORT ZONE 227 P	SR LADY EASE 914 ET	
M822899 M6 MS 104 DUKE 540 P	M6 GRID MAKER 104 PET	
	M6 MS DUKE 9497 PET	
LT LONG DISTANCE 9001 PLD	LT SILVER DISTANCE 5342P	
MEAD MISS CROCUS M621	LT BELLE 7026 P	
F1182227 MEAD MISS CROCUS K658	SMR WALDORF 83W PLD	
	MEAD MISS CROCUS H728	

CED	BEPD	WEPD	YEPD	SC	MILK	CW	MARB	RE	TSI
+11.8	-2.6	+39	+74	-0.1	+31	+2	+0.21	+0.73	+226.91

- Similarly EPD profile to half sister, Lot 216.
- AI bred to WCC Milestone 5223 on 11/08/21 and Pasture Exposed to Mead LCC Bullsseye T484 from 11/20/21 to 2/14/22. Ultrasound estimates conception on 12/5/21.

DAM'S PROD. RECORDS
BR 5-94
WR 5-102
YR 2-95
IMF 2-127
REA 2-100



Active Dams Spring 2022 Breed Averages

CED	BW	WW	YW	Milk	MCE	MTL	SC	CW	RE	Fat	Marb	TSI
+5.4	0.0	+54.1	+97.4	+21.6	+5.4	+48.7	+0.8	+18.2	+0.67	+0.006	+0.09	+239.99

FALL BRED COWS CHAROLAIS



223 MEAD R1707 OF 7903 M704

BD: 9-10-2017	Cow F1261055	Tattoo: R1707
LT BLUEGRASS 4017 P	LT ASSERTION 1277 P	
LT BLUE VALUE 7903 ET	LT PEARL'S BREEZE 2236 P	
EM 745516	LT UNLIMITED DUKE 1172 P	
LT UNLIMITED MAID 7184 P	LT UNLIMITED LASS 2156P	
	FARAWAY CHICO 4T PLD ET	
SMR WALDORF 83W PLD	FARAWAY MS SUPREME 23S PLD ET	
MEAD MISS CROCUS M704	LT UNLIMITED EASE 9108	
F1182212	MF MISS CROCUS E518 P	

DAM'S PROD. RECORDS
BR 6:112
WR 6:103
YR 3:100
IMF 2:102
REA 2:105

CED	BEPD	WEPD	YEPD	SC	MILK	CW	MARB	RE	TSI
+10.1	-1.9	+48	+79	+0.9	+24	+5	+0.21	+0.50	+224.74

- Top 15% or better for CED, BW, MCE and Marb. Blue Value daughter raised by a Waldorf daughter.
- R1707 was AI bred to JMAR Hosea 2M70 on 11/9/21 and Pasture Exposed to Mead LCC Bullseye T484 from 11/20/21 to 2/14/22. Ultrasound confirms AI date.

221 MEAD S1715 OF 8060 Q822

BD: 9-15-2018	Cow F1272005	Tattoo: S1715
LT RIO BRAVO 3181 P	LT RIO BLANCO 1234 P	
LT RUSHMORE 8060 PLD	LT 7N OF DUKE 9083 PLD	
M760665	LT UNLIMITED EASE 9108	
LT BRENDA'S EASE 3055PLD	LT BRENDA 1014 PLD	
	LT BLUEGRASS 4017 P	
LT BLUE VALUE 7903 ET	LT UNLIMITED MAID 7184 P	
MEAD MISS CROCUS Q822	MEAD GRIDMAKER 1224	
F1238626	PF MISS CROCUS 7004 P	

DAM'S PROD. RECORDS
BR 3:92
WR 3:93
YR 2:92
IMF NA-NA
REA NA-NA

CED	BEPD	WEPD	YEPD	SC	MILK	CW	MARB	RE	TSI
+17.5	-7	+53	+93	+0.7	+31	+18	+0.23	+0.54	+242.95

- Two daughters are retained in the herd from this Rushmore daughter. Top 1% CED and BW with top 9% Milk and Marb. Rushmore daughters are top cows throughout the country.
- S1715 was AI bred to Mead Lockstep U1113 on 11/9/21 and Pasture Exposed to Mead LCC Bullseye T484 from 11/20/21 to 2/14/22. Ultrasound verifies AI date.

224 MEAD R1697 OF 417P M376

BD: 8-23-2017	Cow F1261050	Tattoo: R1697
LT RUSHMORE 8060 PLD	LT RIO BRAVO 3181 P	
CCC WC RESOURCE 417 P	LT BRENDA'S EASE 3055PLD	
M846721	WC CCC BLUE GIRL 1528 P	
	LT BLUE VALUE 7903 ET	
TR MR FIRE WATER 5792RET	CCC BAD GIRLFRIEND U146 P ET	
MEAD ESMEIRELDA M376	THOMAS OAH E WIND 0772ET P	
F1170570	THOMASWISSERSWEET764ET	
MF ESMEIREIDA E064P	RC BUDSMYDAD 225 POLLED	
	PF MF ESMEIREIDA 1131 P	

DAM'S PROD. RECORDS
BR NA
WR NA-NA
YR NA-NA
IMF NA-NA
REA NA-NA

CED	BEPD	WEPD	YEPD	SC	MILK	CW	MARB	RE	TSI
+1.4	+1	+73	+128	+1.1	+23	+35	+0.11	+1.11	+266.42

- Top 4% TSI for daughter of Resource. Top 2% WW, YW, CW & E traits.
- R1697 was AI bred to JMAR Hosea 2M70 on 11/9/21 and Pasture Exposed to Mead LCC Bullseye T484 from 11/20/21 to 2/14/22. Ultrasound confirms AI date.

222 MEAD S1658 OF 4017 P893

BD: 8-17-2018	Cow F1271896	Tattoo: S1658
LT LONG DISTANCE 9001 PLD	LT SILVER DISTANCE 5342 P	
WC BOOTLEGGER 4017 P	LT BELLE 7026 P	
M845386	WC RITA 1534 P	
	LT BLUE VALUE 7903 ET	
LT LEDGER 0332 P	MISS RCB RITA R017	
MEAD P893 OF L949 P	LT BLUEGRASS 4017 P	
F1260950	LT BRENDA 6120 PLD	
MEAD MS MORRISON L949	LT EASY PRO 1158 PLD	
	MS MORRISON 817 POLLED	

DAM'S PROD. RECORDS
BR 4:97
WR 4:106
YR 2:106
IMF 1:99
REA 1:109

CED	BEPD	WEPD	YEPD	SC	MILK	CW	MARB	RE	TSI
+6.9	-0.2	+49	+89	+0.6	+28	+12	+0.25	+0.52	+234.01

- Bootlegger daughter with top 5% Marb and excellent milk and calving ease traits, as has become expected from Bootlegger sons and daughters.
- Lot 222 was AI bred on 11/08 to Mead Lockstep and Pasture Exposed to Mead LCC Bullseye T484 from 11/20/21 to 2/14/22. Ultrasound estimates conception on 12/20/21.

225 MEAD MISS Q940

BD: 9-21-2016	Cow F1238649	Tattoo: Q940
LT LONG DISTANCE 9001 PLD	LT SILVER DISTANCE 5342 P	
WC BOOTLEGGER 4017 P	LT BELLE 7026 P	
M845386	WC RITA 1534 P	
	LT BLUE VALUE 7903 ET	
BALDRIDGE KOJACK 29K	MISS RCB RITA R017	
MISS MORRISON 619 POLLED	BALDRIDGE FASTTRACK 82F	
F1062561	BALDRIDGE ELVIRA 95H	
MORRISON'S MS WY WIND 425	LT WYOMING WIND 4020 PLD	
	MORRISON'S MS CAMELOT414	

DAM'S PROD. RECORDS
BR NA
WR NA-NA
YR NA-NA
IMF NA-NA
REA NA-NA

CED	BEPD	WEPD	YEPD	SC	MILK	CW	MARB	RE	TSI
+9	-0.3	+60	+99	+0.4	+25	+11	+0.08	+0.67	+238.48

- Bootlegger daughter from the Miss Morrison cow family. Use a group of these sisters with black or red bulls to make a top notch set of replacement females.
- Lot 225 was Pasture Exposed to Mead LCC Bullseye T484 from 11/15/21 to 2/14/22. Ultrasound estimates conception on 12/10/21.



226 MEAD Q899 OF 4017 N1047

BD: 9-12-2016	Cow F1238640	Tattoo: Q899
LT LONG DISTANCE 9001 PLD	LT SILVER DISTANCE 5342 P	
WC BOOTLEGGER 4017 P	LT BELLE 7026 P	
M845386	WC RITA 1534 P	
	LT BLUE VALUE 7903 ET	
LT LONG DISTANCE 9001 PLD	MISS RCB RITA R017	
MEAD BRIAR N1047	LT SILVER DISTANCE 5342P	
F1201291	LT BELLE 7026 P	
MEAD BRIAR L957	SMR WALDORF 83W PLD	
	MEAD BRIAR G426 P	

DAM'S PROD. RECORDS
BR 4:102
WR 4:91
YR 1:88
IMF 1:103
REA 1:89

CED	BEPD	WEPD	YEPD	SC	MILK	CW	MARB	RE	TSI
+12.5	-3.7	+45	+72	+0.2	+15	-6	+0.13	+0.39	+217.72

- Double digit CED. Q899 was Pasture Exposed to Mead LCC Bullseye T484 from 11/15/21 to 2/14/22. Ultrasound estimates conception on 12/15/21.

Active Dams Spring 2022 Breed Averages

CED	BW	WW	YW	Milk	MCE	MTL	SC	CW	RE	Fat	Marb	TSI
+5.4	0.0	+54.1	+97.4	+21.6	+5.4	+48.7	+0.8	+18.2	+0.67	+0.006	+0.09	+239.99

FALL BRED COWS CHAROLAIS

227 MEAD LADY KLONDIKE Q897

BD: 9-11-2016	Cow F1238639	Tattoo: Q897
LT RIO BRAVO 3181 P	LT RIO BLANCO 1234 P	
LT RUSHMORE 8060 PLD	LT 7N OF DUKE 9083 PLD	
M760665 LT BRENDA'S EASE 3055PLD	LT UNLIMITED EASE 9108	
	LT BRENDA 1014 PLD	
LT LEDGER 0332 P	LT BLUEGRASS 4017 P	
MEAD LADY KLONDIKE M1095	LT BRENDA 6120 PLD	
F1201281 MEAD LADY KLONDIKE K531	LT EASY PRO 1158 PLD	
	MEAD LADY KLONDIKE I602	

CED	BEPD	WEPD	YEPD	SC	MILK	CW	MARB	RE	TSI
+7.4	-1.5	+52	+96	+1.1	+36	+21	+0.24	+0.67	+242.25

- Rushmore x Ledger combination has worked well here, both for bulls and cows. Top 2% Milk and top 5% Marb.
- Lot 227 was Pasture Exposed to Mead LCC Bullseye T484 from 11/15/21 to 2/14/22. Ultrasound estimates conception on 12/20/21.

DAM'S PROD. RECORDS
BR 5-98
WR 5-101
YR 2-101
IMF 2-106
REA 2-111

229 MEAD MS IMPRESSIVE Q777

BD: 8-30-2016	Cow F1238619	Tattoo: Q777
LT LONG DISTANCE 9001 PLD	LT SILVER DISTANCE 5342 P	
WC BOOTLEGGGER 4017 P	LT BELLE 7026 P	
M845386 WC RITA 1534 P	LT BLUE VALUE 7903 ET	
	MISS RCB RITA R017	
LT LEDGER 0332 P	LT BLUEGRASS 4017 P	
MEAD MS IMPRESSIVE N405	LT BRENDA 6120 PLD	
F1186729 MF MS IMPRESSIVE E201	RSCR THE ROCK K003 P ET	
	MF MS IMPRESSIVE B221	

CED	BEPD	WEPD	YEPD	SC	MILK	CW	MARB	RE	TSI
+8.1	-0.5	+52	+96	+0.6	+17	+12	+0.17	+0.58	+240.38

- Q777 was AI bred to JMAR Hosea on 11/9/21 and Pasture Exposed to Mead LCC Bullseye T484 from 11/20/21 to 2/14/22. Ultrasound confirms AI date.

DAM'S PROD. RECORDS
BR 3-97
WR 2-85
YR NA-NA
IMF NA-NA
REA NA-NA

228 MEAD MSS CROCUS Q822

BD: 9-3-2016	Cow F1238626	Tattoo: Q822
LT BLUEGRASS 4017 P	LT ASSERTION 1277 P	
LT BLUE VALUE 7903 ET	LT PEARL'S BREEZE 2236 P	
EM 745516 LT UNLIMITED MAID 7184 P	LT UNLIMITED DUKE 1172 P	
	LT UNLIMITED LASS 2156P	
MEAD GRIDMAKER I224	M6 GRIDMAKER 104 PET	
MEAD MISS CROCUS K178	HPF MS ELIXIR 202 P	
F1138398 PF MISS CROCUS 7004 P	KC PUREPOWER TSI POLLED	
	SAC MISS HESTER	

CED	BEPD	WEPD	YEPD	SC	MILK	CW	MARB	RE	TSI
+8.4	-0.2	+54	+92	+0.4	+21	+15	+0.28	+0.48	+236.47

- Proven Blue Value daughter from the Crocus Cow Family. Top 3% Marb.
- Q822 was Pasture Exposed to Mead LCC Bullseye T484 from 11/15/21 to 2/14/22. Ultrasound estimates conception on 12/15/21.

DAM'S PROD. RECORDS
BR NA
WR NA-NA
YR NA-NA
IMF NA-NA
REA NA-NA

230 MEAD LADY KLONDIKE Q1073

BD: 11-3-2016	Cow F1238608	Tattoo: Q1073
LT LEDGER 0332 P	LT BLUEGRASS 4017 P	
MEAD LEDGER N413	LT BRENDA 6120 PLD	
M846671 MEAD LADY J043	M6 GRID MAKER 104 PET	
	MEAD LADY G092	
LT LONG DISTANCE 9001 PLD	LT SILVER DISTANCE 5342P	
MEAD LADY KLONDIKE M616	LT BELLE 7026 P	
F1182224 MEAD LADY KLONDIKE K613	SMR WALDORF 83W PLD	
	MEAD LADY KLONDIKE H722	

CED	BEPD	WEPD	YEPD	SC	MILK	CW	MARB	RE	TSI
+4	+1.1	+52	+96	+0.9	+26	+15	+0.20	+0.75	+241.48

- Ledger daughter from the Lady Klondike cow family with excellent growth and Marb traits.
- Lot was AI bred to JMAR Hosea on 11/9/21 and Pasture Exposed to Mead LCC Bullseye T484 from 11/20/21 to 2/14/22. Ultrasound confirms AI date.

DAM'S PROD. RECORDS
BR 6-104
WR 5-103
YR 3-111
IMF 2-97
REA 2-108

FALL BRED COWS HERD UNITS

231 MEAD 63895

Cow	Tattoo: 63895
-----	---------------

232 MEAD 69169

Cow	Tattoo: 69169
-----	---------------

233 MEAD Q071

Cow	Tattoo: Q071
-----	--------------

234 MEAD T1258

Cow	Tattoo: T1258
-----	---------------

235 MEAD X345

Cow	Tattoo: X345
-----	--------------

Lots 231-235 are bred to Mead Power Surge T121 or Mead Octane and due to calve Mid-September.

236 MEAD Q128

Cow	Tattoo: Q128
-----	--------------

237 MEAD S354

Cow	Tattoo: S354
-----	--------------

Lots 236 & 237 are bred to Mead Power Surge T121 and due to calve 10/5/22.

238 MEAD R1278

Cow	Tattoo: R1278
-----	---------------

239 MEAD R656

Cow	Tattoo: R656
-----	--------------

240 MEAD T1260

Cow	Tattoo: T1260
-----	---------------

Lots 238-240 are bred to Mead Octane and due to calve 10/15/22.

Active Dams Spring 2022 Breed Averages

CED	BW	WW	YW	Milk	MCE	MTL	SC	CW	RE	Fat	Marb	TSI
+5.4	0.0	+54.1	+97.4	+21.6	+5.4	+48.7	+0.8	+18.2	+0.67	+0.006	+0.09	+239.99

SPRING PAIRS CHAROLAIS



Mead Ledger N413, Maternal brother to Lot 329

329 MEAD R015 OF 5223 J043

BD: 01-21-2017 Cow F1241957 Tattoo: R015
WC BENELLI 2134 P ET DA PASSPORT 502 P ET
WC MILESTONE 5223 P JWK CLARICE J139 ET
M865273 WC LADY BLUE 0506 P LT BLUE VALUE 7903 ET
M6 GRID MAKER 104 PET DS MISS FAB MACK P ET
MEAD LADY J043 WCR SIR TRADITION 066
F123342 MEAD LADY G092 P VCR MISS MAC IV 317
LT WYOMING WIND 4020 PLD
ORR'S MS IMPRESSIVE TWIN

CED	BEPD	WEPD	YEPD	SC	MILK	CW	MARB	RE	TSI
+6.2	+0.2	+49	+93	+1.0	+29	+25	+0.20	+0.98	+241.81

- Milestone daughter from Mead Lady J043. maternal sister raised the overall high selling bull in the March 2022 sale to ST Genetics. maternal sister to Mead Ledger N413, a bull used as a herd sire for many years. top 3% RE and top 15% Marb.
- Sells with a heifer calf (329A) born on 1/15/22 sired by LT Authority. 73 lbs Tattoo X421
- AI bred to Mead Lockstep on 3/11/22. Pasture Exposed to Mead Rushmore V665 from 4/1/22 through sale day.

330 MEAD R1669 OF 5223 M619

BD: 09-11-2017 Cow F1260948 Tattoo: R1669
WC BENELLI 2134 P ET DA PASSPORT 502 P ET
WC MILESTONE 5223 P JWK CLARICE J139 ET
M865273 WC LADY BLUE 0506 P LT BLUE VALUE 7903 ET
LT BLUE VALUE 7903 ET DS MISS FAB MACK P ET
MEAD MISS M663 LT BLUEGRASS 4017 P
F1182359 MEAD MS PRO K094 LT UNLIMITED MAID 7184 P
LT EASY PRO 1158 PLD
MEAD MS IMPRESSIVE H086

CED	BEPD	WEPD	YEPD	SC	MILK	CW	MARB	RE	TSI
+6.9	-0.4	+62	+109	+0.9	+27	+21	+0.28	+0.78	+254.97

- top 3% Marb and top 15% TSI
- Sells with a bull calf (330A) born on 11/25/21 sired by DC/CRJ Tank E108 P. 78 lbs Tattoo X826
- AI bred to WCF MR SILVER GUN 467 on 2/7/22. Pasture Exposed to Mead LCC Bullseye T484 from 2/15/22 to 4/10/22. Pasture Exposed to Mead Rushmore V665 from 4/1/22 through sale day.

331 MEAD R918 OF 8060 M844

BD: 07-28-2017 Cow F1261119 Tattoo: R918
LT RIO BRAVO 3181 P LT RIO BLANCO 1234 P
LT RUSHMORE 8060 PLD LT 7N OF DUKE 9083 PLD
M760665 LT BRENDA'S EASE 3055PLD LT UNLIMITED EASE 9108
SMR WALDORF 83W PLD LT BRENDA 1014 PLD
MEAD CASSIE M844 FARAWAY CHICO 4T PLD ET
F1182218 MEAD CASSIE G400 P TW FARAWAY MS SUPREME 235 PLD ET
LT WYOMING WIND 4020 PLD
M&M MS 9176 0518 PLD

CED	BEPD	WEPD	YEPD	SC	MILK	CW	MARB	RE	TSI
+13.3	-4.2	+53	+91	+1.1	+34	+18	+0.08	+0.57	+234.32

- Rushmore daughter with elite CED and Milk traits.
- Sells with a heifer calf (331A) born on 12/10/21 sired by DC/CRJ Tank E108P. 76 lbs Tattoo X844
- AI bred to WCF MR SILVER GUN 467 on 2/7/22. Pasture Exposed to Mead LCC Bullseye T484 from 2/15/22 to 4/10/22. Pasture Exposed to Mead Rushmore V665 from 4/1/22 through sale day.

332 MEAD S480 OF 8060 Q593

BD: 11-08-2017 Cow F1262336 Tattoo: S480
LT RIO BRAVO 3181 P LT RIO BLANCO 1234 P
LT RUSHMORE 8060 PLD LT 7N OF DUKE 9083 PLD
M760665 LT BRENDA'S EASE 3055PLD LT UNLIMITED EASE 9108
LT BLUE VALUE 7903 ET LT BRENDA 1014 PLD
MEAD MISS Q593 LT BLUEGRASS 4017 P
F1223647 MEAD MS MAC L964 LT UNLIMITED MAID 7184 P
SMR WALDORF 83W PLD
MEAD MS MAC I017

CED	BEPD	WEPD	YEPD	SC	MILK	CW	MARB	RE	TSI
+13.2	-4.1	+53	+98	+1.0	+36	+17	+0.22	+0.58	+245.49

- Use a group of these Rushmore daughters to start a top notch Charolais herd or breed with black or red bulls to produce those highly sought after F1 heifers.
- Sells with a bull calf (332A) born on 1/15/22 sired by Mead Rushmore Q798. 81 lbs Tattoo X633
- AI bred to Mead Lockstep on 3/11/22. Pasture Exposed to Mead Rushmore V665 from 4/1/22 through sale day.

333 MEAD S482 OF 8060 P316

BD: 12-14-2017 Cow F1262337 Tattoo: S482
LT RIO BRAVO 3181 P LT RIO BLANCO 1234 P
LT RUSHMORE 8060 PLD LT 7N OF DUKE 9083 PLD
M760665 LT BRENDA'S EASE 3055PLD LT UNLIMITED EASE 9108
WC BIG BEN 9036 P LT BRENDA 1014 PLD
MEAD LADY P316 VCRMISSDUCHESSE9506POLLED
F1243058 MEAD LADY M398 TR PCZ RAPID FIRE 9775 ET
MEAD LADY I103

CED	BEPD	WEPD	YEPD	SC	MILK	CW	MARB	RE	TSI
+11.1	-3	+55	+102	+1.2	+33	+17	+0.11	+0.52	+245.54

- Sells with a heifer calf (333A) born on 11/6/21 sired by DC/CRJ Tank E108P. 75 lbs Tattoo X712
- AI bred to WCF MR SILVER GUN 467 on 2/7/22. Pasture Exposed to Mead LCC Bullseye T484 from 2/15/22 to 4/10/22. Pasture Exposed to Mead Rushmore V665 from 4/1/22 through sale day.

334 MEAD S491 OF 8060 P292

BD: 12-02-2017 Cow F1262255 Tattoo: S491
LT RIO BRAVO 3181 P LT RIO BLANCO 1234 P
LT RUSHMORE 8060 PLD LT 7N OF DUKE 9083 PLD
M760665 LT BRENDA'S EASE 3055PLD LT UNLIMITED EASE 9108
LT LEDGER 0332 P LT BRENDA 1014 PLD
MEAD PAMELA P292 LT BLUEGRASS 4017 P
F1205394 MEAD PAMELA I085 LT BRENDA 6120 PLD
M6 GRID MAKER 104 PET
MF PAMELA B196

CED	BEPD	WEPD	YEPD	SC	MILK	CW	MARB	RE	TSI
+9.8	-2.2	+49	+99	+1.4	+34	+23	+0.20	+0.67	+246.96

- Sale feature. maternal Brother to Mead LCC Bullseye T484.
- Sells with a bull calf (334A) born on 1/1/22 sired by Mead Rushmore Q798. 74 lbs Tattoo X396
- AI bred to Mead Lockstep on 3/11/22. Pasture Exposed to Mead Rushmore V665 from 4/1/22 through sale day.



Mead LCC Bullseye T484, Maternal Brother to Lot 334

Active Dams Spring 2022 Breed Averages

CED	BW	WW	YW	Milk	MCE	MTL	SC	CW	RE	Fat	Marb	TSI
+5.4	0.0	+54.1	+97.4	+21.6	+5.4	+48.7	+0.8	+18.2	+0.67	+0.006	+0.09	+239.99

SPRING PAIRS CHAROLAIS



Mead Rushmore U525, Son of Lot 335

335 MEAD S466 OF L419 H186

BD:	01-18-2018	Cow F1262264	Tattoo: S466
M6 GRID MAKER 104 PET	WCR SIR TRADITION 066		
MEAD GRID MAKER L419	VCR MISS MAC IV 317		
M817537 MEAD PAMELA H011P	LT WYOMING WIND 4020 PLD		
	MF PAMELA B196		
	WCR PRIME CUT 764 PLD		
LT POLLED VALUE 9089	LT UNLIMITED MAID 7184 P		
MEAD MS IMPRESSIVE H186P	RSCR THE ROCK K003 P ET		
F1088087 MF MS IMPRESSIVE E201	MF MS IMPRESSIVE B221		

DAM'S PROD. RECORDS
BR 9-101
WR 8-104
YR 5-100
IMF 4-98
REA 4-105

CED	BEPD	WEPD	YEPD	SC	MILK	CW	MARB	RE	TSI
+4.4	+0.9	+42	+97	+1.0	+35	+19	+0.07	+0.62	+244.02

- Sells with a heifer calf (335A) born on 12/28/21 sired by M6 Gridmaker 104 PET. 81 lbs Tattoo X806
- AI bred to KC JACK 0891 P on 2/7/22. Pasture Exposed to Mead LCC Bullseye T484 from 2/15/22 to 4/10/22. Pasture Exposed to Mead Rushmore V665 from 4/1/22 through sale day.

336 MEAD Q184 OF M844

BD:	02-25-2016	Cow F1223661	Tattoo: Q184
M6 GRID MAKER 104 PET	WCR SIR TRADITION 066		
MEAD GRID MAKER L419	VCR MISS MAC IV 317		
M817537 MEAD PAMELA H011P	LT WYOMING WIND 4020 PLD		
	MF PAMELA B196		
	FARAWAY CHICO 4T PLD ET		
SMR WALDORF 83W PLD	FARAWAY MS SUPREME 235 PLD ET		
MEAD CASSIE M844	FARAWAY WIND 4020 PLD		
F1182218 MEAD CASSIE G400 P TW	M&M MS 9176 0518 PLD		

DAM'S PROD. RECORDS
BR 3-90
WR 2-103
YR 2-102
IMF 1-100
REA 1-100

CED	BEPD	WEPD	YEPD	SC	MILK	CW	MARB	RE	TSI
+6.8	+0.8	+59	+104	+11.1	+30	+15	+0.05	+0.74	+244.94

- Sells with a heifer calf (336A) born on 12/4/21 sired by DC/CRJ Tank E108P. 86 lbs Tattoo X478
- AI bred to KC JACK 0891 P on 2/7/22. Pasture Exposed to Mead LCC Bullseye T484 from 2/15/22 to 4/10/22. Pasture Exposed to Mead Rushmore V665 from 4/1/22 through sale day.

337 MEAD Q592 OF L953

BD:	02-11-2016	Cow F1223646	Tattoo: Q592
M6 GRID MAKER 104 PET	WCR SIR TRADITION 066		
MEAD GRID MAKER L419	VCR MISS MAC IV 317		
M817537 MEAD PAMELA H011P	LT WYOMING WIND 4020 PLD		
	MF PAMELA B196		
	LT EASY PRO 1158 PLD		
MEAD EASY PRO J863	MEAD ACTRESS G434 P		
MEAD MISS PRIMO L953	LT POLLED VALUE 9089		
F1166491 MEAD MISS PRIMO H724	JSM MISS PRIMO		

DAM'S PROD. RECORDS
BR 3-117
WR 3-105
YR 2-102
IMF 2-93
REA 2-97

CED	BEPD	WEPD	YEPD	SC	MILK	CW	MARB	RE	TSI
+7.3	+0.7	+53	+109	+1.0	+33	+19	+0.08	+0.78	+254.92

- Sells with a bull calf (337A) born on 1/16/22 sired by Mead Rushmore Q798. 88 lbs Tattoo X631
- AI bred to Mead Lockstep on 3/11/22. Pasture Exposed to Mead Rushmore V665 from 4/1/22 through sale day.

338 MEAD Q904 OF L419 817

BD:	09-13-2016	Cow F1238641	Tattoo: Q904
M6 GRID MAKER 104 PET	WCR SIR TRADITION 066		
MEAD GRID MAKER L419	VCR MISS MAC IV 317		
M817537 MEAD PAMELA H011P	LT WYOMING WIND 4020 PLD		
	MF PAMELA B196		
BALDRIDGE KOJACK 29K	BALDRIDGE FASTTRACK 82F		
MS MORRISON 817 POLLED	BALDRIDGE ELVIRA 95H		
F1100308 MORRISON'S WY WIND 421 P	LT WYOMING WIND 4020 PLD		
	MORRISON'S MS MAC 506PLD		

DAM'S PROD. RECORDS
BR 6-100
WR 5-100
YR 1-103
IMF 3-198
REA 3-94

CED	BEPD	WEPD	YEPD	SC	MILK	CW	MARB	RE	TSI
+10.3	-1.1	+58	+106	+0.7	+39	+11	+0.06	+0.65	+248.95

- top 1% Milk with top 15% CED.
- Sells with a heifer calf (338A) born on 12/23/21 sired by M6 Gridmaker 104 PET. 84 lbs Tattoo X837
- AI bred to WCF MR SILVER GUN 467 on 2/7/22. Pasture Exposed to Mead LCC Bullseye T484 from 2/15/22 to 4/10/22. Pasture Exposed to Mead Rushmore V665 from 4/1/22 through sale day.

339 MEAD MISS CROCUS P890

BD:	10-02-2015	Cow F1260949	Tattoo: P890
M6 GRID MAKER 104 PET	WCR SIR TRADITION 066		
MEAD GRID MAKER L419	VCR MISS MAC IV 317		
M817537 MEAD PAMELA H011P	LT WYOMING WIND 4020 PLD		
	MF PAMELA B196		
LT EASY PRO 1158 PLD	LT UNLIMITED EASE 9108		
MEAD MISS CROCUS J842	LT LADY MACBETH 8413 ETP		
F1133603 MEAD MISS CROCUS C511 P	LT UNLIMITED EASE 9108		
	MF MISS CROCUS E518 P		

DAM'S PROD. RECORDS
BR 2-83
WR 2-84
YR 1-100
IMF 2-114
REA 2-90

CED	BEPD	WEPD	YEPD	SC	MILK	CW	MARB	RE	TSI
+15.8	-4.6	+45	+87	+0.7	+28	+13	+0.21	+0.70	+240.57

- Sells with heifer calf (339A) born 3/9/22 sired by Mead Rushmore Q798, 76 lbs Tattoo X607
- Pasture Exposed to Mead 1682 Payweight R296 from 4/10/22 through the sale.

340 MEAD T338 OF 227 R058

BD:	11-24-2018	Cow F1275109	Tattoo: T338
M6 FRESH AIR 8165 P ET	THREE TREES WIND 0383 ET		
M6 COMFORT ZONE 227 P	SR LADY EASE 914 ET		
M822899 M6 MS 104 DUKE 540 P ET	M6 GRID MAKER 104 PET		
	M6 MS DUKE 9497 PET		
WC BOOTLEGGER 4017 P	LT LONG DISTANCE 9001 PLD		
MEAD ESMIREIDA R058	WC RITA 1534 P		
F1242047 MEAD ESMIREIDA L425	M6 GRID MAKER 104 PET		
	MEAD ESMIREIDA H191P		

DAM'S PROD. RECORDS
BR 3-99
WR 2-97
YR NA-NA
IMF NA-NA
REA NA-NA

CED	BEPD	WEPD	YEPD	SC	MILK	CW	MARB	RE	TSI
+13.9	-3.6	+44	+85	+0.2	+22	+9	+0.19	+0.79	+238.25

- Sells with a bull calf (339A) born on 11/23/21 sired by ABJR New Hank 595P. 82 lbs Tattoo X830
- AI bred to WCF MR SILVER GUN 467 on 2/7/22. Pasture Exposed to Mead LCC Bullseye T484 from 2/15/22 to 4/10/22. Pasture Exposed to Mead Rushmore V665 from 4/1/22 through sale day.



Active Dams Spring 2022 Breed Averages

CED	BW	WW	YW	Milk	MCE	MTL	SC	CW	RE	Fat	Marb	TSI
+5.4	0.0	+54.1	+97.4	+21.6	+5.4	+48.7	+0.8	+18.2	+0.67	+0.006	+0.09	+239.99

SPRING PAIRS CHAROLAIS



Mead Milestone V032, Son of Lot 341

344 MEAD LADY P272

BD: 01-03-2015 Cow F1205400 Tattoo: P272

LT BLUEGRASS 4017 P
LT ASSERTION 1277 P
LT PEARL'S BREEZE 2236 P
LT UNLIMITED DUKE 1172 P
LT UNLIMITED LASS2156P
ASC ELIMINATOR 032
WCR MISS DUKE 8714
LT WYOMING WIND 4020 PLD
ORR'S MS IMPRESSIVE TWIN

LT LEDGER 0332 P
M791626 LT BRENDA 6120 PLD

LT EASY PRO 1158 PLD
MEAD LADY KLONDIKE K531
F1150420 MEAD LADY KLONDIKE I602

LT ASSERTION 1277 P
LT PEARL'S BREEZE 2236 P
LT RIO BRAVO 3181 P
LT BRENDA'S EASE 3055PLD
LT UNLIMITED EASE 9108
LT LADY MACBETH 8413 ETP
M6 GRID MAKER 104 PET
PF MF LADY KLONDIKE 1098

CED	BEPD	WEPD	YEPD	SC	MILK	CW	MARB	RE	TSI
+8.8	-1.3	+42	+76	+0.9	+22	+9	+0.28	+0.49	+224.15

DAM'S PROD. RECORDS
BR 7:104
WR 7:114
YR 6:103
IMF 7:98
REA 7:98

- Sells with a heifer calf (344A) born on 11/11/21 sired by LT Rushmore 8060. 75 lbs Tattoo X796.
- AI bred to KC JACK 0891 P on 2/7/22. Pasture Exposed to Mead LCC Bullseye T484 from 2/15/22 to 4/10/22. Pasture Exposed to Mead Rushmore V665 from 4/1/22 through sale day.

341 MEAD Q946 OF 0332 K531

BD: 09-09-2016 Cow F1238650 Tattoo: Q946

LT BLUEGRASS 4017 P
LT LEDGER 0332 P
M791626 LT BRENDA 6120 PLD

LT EASY PRO 1158 PLD
MEAD LADY KLONDIKE K531
F1150420 MEAD LADY KLONDIKE I602

LT ASSERTION 1277 P
LT PEARL'S BREEZE 2236 P
LT RIO BRAVO 3181 P
LT BRENDA'S EASE 3055PLD
LT UNLIMITED EASE 9108
LT LADY MACBETH 8413 ETP
M6 GRID MAKER 104 PET
PF MF LADY KLONDIKE 1098

CED	BEPD	WEPD	YEPD	SC	MILK	CW	MARB	RE	TSI
+2.1	+1.8	+68	+122	+1.2	+24	+29	+0.26	+0.84	+262.94

DAM'S PROD. RECORDS
BR 6:96
WR 6:101
YR 3:100
IMF 5:101
REA 5:108

- Ledger daughter with top 6% TSI AND top 4% Marb, WW, & YW. Son Milestone V032 was featured in this March 2022 sale.
- Sells with a heifer calf (341A) born on 12/1/21 sired by DC/CRJ Tank E108 P. 92 lbs Tattoo X812
- AI bred to KC JACK 0891 P on 2/7/22. Pasture Exposed to Mead LCC Bullseye T484 from 2/15/22 to 4/10/22. Pasture Exposed to Mead Rushmore V665 from 4/1/22 through sale day.

345 MEAD CROCUS N426

BD: 01-15-2014 Cow F1186735 Tattoo: N426

LT BLUEGRASS 4017 P
LT LEDGER 0332 P
M791626 LT BRENDA 6120 PLD

LT EASY PRO 1158 PLD
MEAD LADY KLONDIKE K531
F1150420 MEAD LADY KLONDIKE I602

LT ASSERTION 1277 P
LT PEARL'S BREEZE 2236 P
LT UNLIMITED DUKE 1172 P
LT UNLIMITED LASS2156P
BCR POLLED UNLIMITED 003
PP MISS SHANDY 214 R194
RC BUDSMYDAD 225 POLLED
MF MISS CROCUS B357 P

CED	BEPD	WEPD	YEPD	SC	MILK	CW	MARB	RE	TSI
+11.0	-1.9	+61	+91	+1.1	+24	+16	+0.24	+0.39	+229.90

DAM'S PROD. RECORDS
BR 7:95
WR 7:100
YR 5:95
IMF 4:100
REA 4:92

- Sells with a heifer calf (345A) born on 2/26/22 sired by Mead Rushmore Q798. 78 lbs Tattoo X610
- Pasture Exposed to Mead 1682 Payweight R296 from 4/10/22 through the sale.

342 MEAD P769 OF 1017 P

BD: 09-09-2015 Cow F1219422 Tattoo: P769

LT BLUEGRASS 4017 P
LT LEDGER 0332 P
M791626 LT BRENDA 6120 PLD

LT EASY PRO 1158 PLD
MEAD LADY KLONDIKE K531
F1150420 MEAD LADY KLONDIKE I602

LT ASSERTION 1277 P
LT PEARL'S BREEZE 2236 P
LT RIO BRAVO 3181 P
LT BRENDA'S EASE 3055PLD
WCR SIR TRADITION 066
VCR MISS MAC IV 317
JWK ELIXIR H011 ET
MANN'S MS EASE 001

CED	BEPD	WEPD	YEPD	SC	MILK	CW	MARB	RE	TSI
+7.9	-1.1	+56	+100	+1.0	+25	+21	+0.33	+0.81	+248.04

DAM'S PROD. RECORDS
BR 6:100
WR 6:98
YR 2:96
IMF 3:114
REA 3:100

- Sells with a bull calf (342A) born on 12/9/21 sired by Mead LCC Bullseye T484. 78 lbs Tattoo X454
- AI bred to KC JACK 0891 P on 2/7/22. Pasture Exposed to Mead LCC Bullseye T484 from 2/15/22 to 4/10/22. Pasture Exposed to Mead Rushmore V665 from 4/1/22 through sale day.

346 MEAD Q612 OF N424

BD: 12-05-2015 Cow F1223676 Tattoo: Q612

LT LONG DISTANCE 9001 PLD
WC DOUBLETREE 2009 P
M814185 WC PRAISE 0058 P

LT LEDGER 0332 P
MEAD N424 OF M726
F1186725 MS MORRISON 726 POLLED

LT SILVER DISTANCE 5342P
LT BELLE 7026 P
JCR SR ASSERTION 606 P
LT PRAISE 8324 P
LT BLUEGRASS 4017 P
LT BRENDA 6120 PLD
MORRISON'S HILLCREST MAC
MORRISON'S WY WIND 421 P

CED	BEPD	WEPD	YEPD	SC	MILK	CW	MARB	RE	TSI
+7.7	+0.1	+59	+110	+0.8	+17	+16	+0.36	+0.51	+255.84

DAM'S PROD. RECORDS
BR 3:126
WR 3:93
YR 1:110
IMF 1:127
REA 1:97

- Sells with a bull calf (346A) born on 11/12/21 sired by DC/CRJ Tank E108 P. 68 lbs Tattoo X731
- AI bred to KC JACK 0891 P on 2/7/22. Pasture Exposed to Mead LCC Bullseye T484 from 2/15/22 to 4/10/22. Pasture Exposed to Mead Rushmore V665 from 4/1/22 through sale day.

343 MEAD CASSIE P344

BD: 02-09-2015 Cow F1205404 Tattoo: P344

LT BLUEGRASS 4017 P
LT LEDGER 0332 P
M791626 LT BRENDA 6120 PLD

LT EASY PRO 1158 PLD
MEAD LADY KLONDIKE K531
F1150420 MEAD LADY KLONDIKE I602

LT ASSERTION 1277 P
LT PEARL'S BREEZE 2236 P
LT UNLIMITED DUKE 1172 P
LT UNLIMITED LASS2156P
M6 GRID MAKER 104 PET
HPF MS EXLIR 202 P
LT WYOMING WIND 4020 PLD
M&M MS 9176 0518 PLD

CED	BEPD	WEPD	YEPD	SC	MILK	CW	MARB	RE	TSI
+13.8	-4.2	+50	+77	+0.8	+20	+12	+0.26	+0.50	+224.05

DAM'S PROD. RECORDS
BR 6:90
WR 6:94
YR 1:80
IMF 2:107
REA 2:97

- Blue Value daughter with top 4% or better CED, BW, Milk and Marb.
- Sells with a bull calf (343A) born on 11/15/21 sired by WC Milestone 5223. 85 lbs Tattoo X767.
- AI bred to WCF MR SILVER GUN 467 on 2/7/22. Pasture Exposed to Mead LCC Bullseye T484 from 2/15/22 to 4/10/22. Pasture Exposed to Mead Rushmore V665 from 4/1/22 through sale day.

347 MEAD T464 OF 2220 Q608

BD: 11-28-2018 Cow F1275090 Tattoo: T464

LT LEDGER 0332 P
WC CAPITAL GAIN 2220 P ET
EM815504 JWK CLARICE J139 ET

LT BLUEGRASS 4017 P
LT BRENDA 6120 PLD
VCR SIR DUKE 914 PLD
JWK CLARICE D050 ET
LT BLUEGRASS 4017 P
LT UNLIMITED MAID 7184 P
SMR WALDORF 83W PLD
MEAD BRIAR G426 P

CED	BEPD	WEPD	YEPD	SC	MILK	CW	MARB	RE	TSI
+11.3	-2.8	+61	+98	+1.1	+33	+17	+0.14	+0.46	+237.55

DAM'S PROD. RECORDS
BR 4:105
WR 3:84
YR NA-NA
IMF NA-NA
REA NA-NA

- Sells with a bull calf (347A) born 12/19/21 sired by Mead Wideload U450. 75 lbs Tattoo X906
- AI bred to Mead Lockstep on 3/11/22. Pasture Exposed to Mead Rushmore V665 from 4/1/22 through sale day.

Active Dams Spring 2022 Breed Averages

CED	BW	WW	YW	Milk	MCE	MTL	SC	CW	RE	Fat	Marb	TSI
+5.4	0.0	+54.1	+97.4	+21.6	+5.4	+48.7	+0.8	+18.2	+0.67	+0.006	+0.09	+239.99

SPRING PAIRS CHAROLAIS

348 MEAD S1681 OF 4017 M851

BD: 09-30-2018 Cow F1271898 Tattoo: S1681
 LT LONG DISTANCE 9001 PLD LT SILVER DISTANCE 5342P
WC BOOTLEGGER 4017 P LT BELLE 7026 P
 M845386 WC RITA 1534 P LT BLUE VALUE 7903 ET
 SMR WALDORF 83W PLD MISS RCB RITA R017
MEAD HAILEE M851 FARAWAY CHICO 4T PLD ET
 F1182220 MEAD HAILEE J827 FARAWAY MS SUPREME 235 PLD ET
 LT EASY PRO 1158 PLD
 MEAD HAILEE GS12 P

DAM'S PROD. RECORDS	
BR	6-103
WR	6-102
YR	1-92
IMF	1-87
REA	1-101

CED	BEPD	WEPD	YEPD	SC	MILK	CW	MARB	RE	TSI
+12.5	-2.3	+53	+86	+0.2	+20	+5	+0.14	+0.60	+230.07

- Sells with a heifer calf (348A) born 11/25/21 sired by ABJR New Hank 595P. 81 lbs Tattoo X827
- AI bred to WCF MR SILVER GUN 467 on 2/7/22. Pasture Exposed to Mead LCC Bullseye T484 from 2/15/22 to 4/10/22. Pasture Exposed to Mead Rushmore V665 from 4/1/22 through sale day.

349 MEAD R1831 OF 4017 P876

BD: 09-05-2017 Cow F1261039 Tattoo: R1831
 LT LONG DISTANCE 9001 PLD LT SILVER DISTANCE 5342P
WC BOOTLEGGER 4017 P LT BELLE 7026 P
 M845386 WC RITA 1534 P LT BLUE VALUE 7903 ET
 MEAD GRID MAKER L419 MISS RCB RITA R017
MEAD CROCUS P876 P M6 GRID MAKER 104 PET
 F1219431 MEAD CROCUS H734 MEAD PAMELA H01P
 M6 GRID MAKER 104 PET
 MF MISS CROCUS B357 P

DAM'S PROD. RECORDS	
BR	4-104
WR	4-113
YR	3-106
IMF	2-94
REA	2-108

CED	BEPD	WEPD	YEPD	SC	MILK	CW	MARB	RE	TSI
+11.4	-1.3	+64	+110	+0.9	+31	+19	+0.14	+0.80	+252.67

- Sells with a heifer calf (349A) born 11/30/21 sired by M6 Gridmaker 104 PET. 73 lbs Tattoo X824
- AI bred to WCF MR SILVER GUN 467 on 2/7/22. Pasture Exposed to Mead LCC Bullseye T484 from 2/15/22 to 4/10/22. Pasture Exposed to Mead Rushmore V665 from 4/1/22 through sale day.

350 MEAD R1830 OF 4017 P937

BD: 08-24-2017 Cow F1261038 Tattoo: R1830
 LT LONG DISTANCE 9001 PLD LT SILVER DISTANCE 5342P
WC BOOTLEGGER 4017 P LT BELLE 7026 P
 M845386 WC RITA 1534 P LT BLUE VALUE 7903 ET
 MEAD GRID MAKER L419 MISS RCB RITA R017
MEAD FERNANDO P937 M6 GRID MAKER 104 PET
 F1260951 MEAD FERNANDO G425 P MEAD PAMELA H01P
 LT WYOMING WIND 4020 PLD
 MF MS FERNANDO C576 P

DAM'S PROD. RECORDS	
BR	1-106
WR	1-94
YR	1-105
IMF	NA-NA
REA	NA-NA

CED	BEPD	WEPD	YEPD	SC	MILK	CW	MARB	RE	TSI
+10.5	-0.6	+54	+105	+0.8	+19	+5	+0.16	+0.51	+251.70

- Sells with a bull calf (350A) born 11/15/21 sired by DC/CRJ Tank E108. 90 lbs Tattoo X766
- AI bred to WCF MR SILVER GUN 467 on 2/7/22. Pasture Exposed to Mead LCC Bullseye T484 from 2/15/22 to 4/10/22. Pasture Exposed to Mead Rushmore V665 from 4/1/22 through sale day.

351 MEAD R058 OF 4017 L425

BD: 11-27-2016 Cow F1242047 Tattoo: R058
 LT LONG DISTANCE 9001 PLD LT SILVER DISTANCE 5342P
WC BOOTLEGGER 4017 P LT BELLE 7026 P
 M845386 WC RITA 1534 P LT BLUE VALUE 7903 ET
 M6 GRID MAKER 104 PET MISS RCB RITA R017
MEAD ESMIREIDA L425 WCR SIR TRADITION 066
 F1154039 MEAD ESMIREIDA H191P VCR MISS MAC IV 317
 JWIK ELIXIR H01 ET
 PF MF ESMIREIDA 1131 P

DAM'S PROD. RECORDS	
BR	1-94
WR	1-96
YR	NA-NA
IMF	NA-NA
REA	NA-NA

CED	BEPD	WEPD	YEPD	SC	MILK	CW	MARB	RE	TSI
+11.9	-2.1	+50	+89	+0.4	+18	+10	+0.15	+0.75	+236.35

- Sells with a bull calf (351A) born 1/13/22 sired by LT Authority. 86 lbs Tattoo X353
- AI bred to Mead Lockstep on 3/11/22. Pasture Exposed to Mead Rushmore V665 from 4/1/22 through sale day.

352 MEAD R051 OF 4017 K304

BD: 12-12-2016 Cow F1241970 Tattoo: R051
 LT LONG DISTANCE 9001 PLD LT SILVER DISTANCE 5342P
WC BOOTLEGGER 4017 P LT BELLE 7026 P
 M845386 WC RITA 1534 P LT BLUE VALUE 7903 ET
 LT EASY PRO 1158 PLD MISS RCB RITA R017
MEAD CROCUS K304 LT UNLIMITED EASE 9108
 F1138401 MEAD CROCUS H734 LT LADY MACBETH 8413 ETP
 M6 GRID MAKER 104 PET
 MF MISS CROCUS B357 P

DAM'S PROD. RECORDS	
BR	4-95
WR	4-102
YR	3-103
IMF	3-96
REA	3-97

CED	BEPD	WEPD	YEPD	SC	MILK	CW	MARB	RE	TSI
+12.8	-2.2	+58	+97	+0.7	+22	+13	+0.28	+0.55	+243.58

- Sells with a heifer calf (352A) born 12/1/21 sired by Mead LCC Bullseye T484. 78 lbs Tattoo X822
- AI bred to WCF MR SILVER GUN 467 on 2/7/22. Pasture Exposed to Mead LCC Bullseye T484 from 2/15/22 to 4/10/22. Pasture Exposed to Mead Rushmore V665 from 4/1/22 through sale day.

353 MEAD T785 OF 4017 P1253

BD: 02-25-2019 Cow F1282632 Tattoo: T785
 LT LONG DISTANCE 9001 PLD LT SILVER DISTANCE 5342P
WC BOOTLEGGER 4017 P LT BELLE 7026 P
 M845386 WC RITA 1534 P LT BLUE VALUE 7903 ET
 MEAD GRID MAKER L419 MISS RCB RITA R017
MEAD ACTRESS P1253 P M6 GRID MAKER 104 PET
 F1219405 MEAD ACTRESS L934 MEAD PAMELA H01P
 BALDRIDGE FASTTRACK 82F
 MEAD ACTRESS J680

DAM'S PROD. RECORDS	
BR	1-105
WR	1-115
YR	NA-NA
IMF	NA-NA
REA	NA-NA

CED	BEPD	WEPD	YEPD	SC	MILK	CW	MARB	RE	TSI
+11.8	-1.5	+62	+103	+0.4	+25	+8	+0.18	+0.58	+245.95

- Sells with a heifer calf (353A) born 11/29/21 sired by LT Inception. 80 lbs Tattoo X841.
- AI bred to WCF MR SILVER GUN 467 on 2/7/22. Pasture Exposed to Mead LCC Bullseye T484 from 2/15/22 to 4/10/22. Pasture Exposed to Mead Rushmore V665 from 4/1/22 through sale day.

354 MEAD S454 OF 4017 Q607

BD: 11-25-2017 Cow F1262330 Tattoo: S454
 LT LONG DISTANCE 9001 PLD LT SILVER DISTANCE 5342P
WC BOOTLEGGER 4017 P LT BELLE 7026 P
 M845386 WC RITA 1534 P LT BLUE VALUE 7903 ET
 MEAD GRID MAKER L419 MISS RCB RITA R017
MEAD MISS Q607 M6 GRID MAKER 104 PET
 F1223655 MEAD MS M415 MEAD PAMELA H01P
 MEAD EASY PRO J863
 MEAD MS GRIDMAKER K175

DAM'S PROD. RECORDS	
BR	4-102
WR	4-105
YR	1-104
IMF	1-97
REA	1-96

CED	BEPD	WEPD	YEPD	SC	MILK	CW	MARB	RE	TSI
+8.2	-0.3	+52	+93	+0.4	+17	+6	+0.12	+0.56	+237.10

- Sells with a heifer calf (354A) born 11/26/21 sired by DC/CRJ Tank E108. 77 lbs Tattoo X820
- AI bred to KC JACK 0891 P on 2/7/22. Pasture Exposed to Mead LCC Bullseye T484 from 2/15/22 to 4/10/22. Pasture Exposed to Mead Rushmore V665 from 4/1/22 through sale day.

355 MEAD Q1083 OF 4017 J879

BD: 11-24-2018 Cow F1238609 Tattoo: Q1083
 LT LONG DISTANCE 9001 PLD LT SILVER DISTANCE 5342P
WC BOOTLEGGER 4017 P LT BELLE 7026 P
 M845386 WC RITA 1534 P LT BLUE VALUE 7903 ET
 MEAD ELIXIR H748 MISS RCB RITA R017
MEAD MISS MORRISON J879 JWIK ELIXIR H01 ET
 F1134441 MISS MORRISON 619 POLLED MEAD LADY GOLDIE F671 P
 BALDRIDGE KOJACK 29K
 MORRISON'S MS WY WIND425

DAM'S PROD. RECORDS	
BR	6-103
WR	5-102
YR	1-97
IMF	1-104
REA	1-99

CED	BEPD	WEPD	YEPD	SC	MILK	CW	MARB	RE	TSI
+12.4	-2.4	+54	+88	+0.4	+16	+8	+0.15	+0.59	+231.62

- Sells with a bull calf (355A) born 12-20-21 sired by DC/CRJ Tank E108. 82 lbs Tattoo X942
- AI bred to Mead Lockstep on 3/11/22. Pasture exposed to Mead Rushmore V665 from 4/1/22 through sale day.

Active Dams Spring 2022 Breed Averages

CED	BW	WW	YW	Milk	MCE	MTL	SC	CW	RE	Fat	Marb	TSI
+5.4	0.0	+54.1	+97.4	+21.6	+5.4	+48.7	+0.8	+18.2	+0.67	+0.006	+0.09	+239.99

CHAROLAIS BULLS



Mead Total Rush V682, Lot 471

471 MEAD TOTAL RUSH V682

BD:	01-13-2021	Bull EM958773	Tattoo: V682
WC TOTAL RUSH 3044 P	LT RUSHMORE 8060 PLD	LT RIO BRAVO 3181 P	LT BRENDA'S EASE 3055 PLD
M832388	WC QUEEN 1120 P	LT STAGECOACH 8068 PLD	LT EASY QUEEN 7067 P
	VCR SIR DUKE 914 PLD	WCR SIR DUKE 761	WCR MISS MAC IV 534
MF PAMELA B196	JWK PAMELA J041 ET	ASC ELIMINATOR 032	JWK PAMELA E167 ET
F954058			

CED	BEPD	WEPD	YEPD	SC	MILK	CW	MARB	RE	TSI
+11.6	-2.9	+59	+97	+1.20	+33	+18	+0.02	+0.68	+236.57
BW	ADJ 205	ADJ 365	HP HT	ADJ SC	%IMF	UREA			
89	100	707	100	1217	100	54.0	38.53	1.57	100

• Mead Total Rush V682 is an ET son of Jennifer's long time favorite Charolais cow, Mead Pamela B196, "Beatrice". He is a large framed bull with double digit CED and top 3% Milk. Beatrice raised many top-selling bulls and top cows and lived to the age of 21. Anyone who came to the farm would hear about Beatrice and her influence will be felt for many years to come.

472 MEAD CITATION V449

BD:	11-19-2020	Bull M958892	Tattoo: V449
LT CITATION 5228 PLD	LT SUNDANCE 2251 PLD	LT LEDGER 0332 P	LT BALLET 9219 POLLED
M866811	LT JULIE 2055 PLD	EATONS ROYAL DYNASTY 6164	LT JULIE 9171 POLLED
	LT LEDGER 0332 P	LT BLUEGRASS 4017 P	LT BRENDA 6120 PLD
MEAD LADY R1875	MEAD LADY G006 P	VCR SIR DUKE 914 PLD	MF MS IMPRESSIVE E201
EF1260932			

CED	BEPD	WEPD	YEPD	SC	MILK	CW	MARB	RE	TSI
+9.1	-1.4	+62	+125	+1.80	+17	+26	+0.09	+0.86	+270.20
BW	ADJ 205	ADJ 365	HP HT	ADJ SC	%IMF	UREA			
87	101	523	85	1067	89	54.0	37.78	3.24	91

• Citation son raised by a direct daughter of Lady G006. top 6% TSI with excellent growth and carcass traits. Homozygous Polled.

473 MEAD LOCK N LOAD V990

BD:	11-26-2020	Bull M958860	Tattoo: V990
ACE-ORR LOCK N LOAD 243P	LT LEDGER 0332 P	LT BLUEGRASS 4017 P	LT BRENDA 6120 PLD
M836295	ORR'S MS PETUNIA 941P	ACE-ORR MAKERS MARK 689	ORR'S MS PETUNIA 0054 ET
	WC BIG BEN 9036 P	LT BLUEGRASS 4017 P	VCRMISSDUCHESSE9506POLLED
MEAD ESMIREIDA Q622	MEAD ESMIREIDA L409	M6 GRID MAKER 104 PET	MEAD ESMIREIDA F068 P
F1223664			

CED	BEPD	WEPD	YEPD	SC	MILK	CW	MARB	RE	TSI
+5.2	+1.8	+66	+119	+1.80	+24	+26	+0.09	+0.73	+259.00
BW	ADJ 205	ADJ 365	HP HT	ADJ SC	%IMF	UREA			
84	99	665	107	1127	98	54.5	38.69	3.51	99

• Lock N Load semen is near impossible to obtain. Lot 474's half brother was our all time top-selling Charolais bull in the fall of 2021. top 20% growth with top 1% scrotal EPDs. Heterozygous Polled.

474 MEAD COMFORT ZONE V068

BD:	12-14-2020	Bull M958840	Tattoo: V068
M6 COMFORT ZONE 227 P	M6 FRESH AIR 8165 P ET	THREE TREES WIND 0383 ET	SR LADY EASE 914 ET
M822899	M6 MS104 DUKE 540 P ET	M6 GRIDMAKER 104 PET	M6 MS DUKE 9497 PET
	LT BLUE VALUE 7903 ET	LT BLUEGRASS 4017 P	LT UNLIMITED MAID 7184 P
MEAD MS BLUE VALUE N409	MEAD MS RULER K135	MD SENTINAL RULER G1520	MORRISON'S MS YL13 042 P
F1186747			

CED	BEPD	WEPD	YEPD	SC	MILK	CW	MARB	RE	TSI
+9.4	-2.2	+47	+78	-0.10	+25	+4	+0.28	+0.59	+228.92
BW	ADJ 205	ADJ 365	HP HT	ADJ SC	%IMF	UREA			
76	90	598	96	1064	92	50.0	32.00	3.29	93

• calving ease bull with top 3% Marb. Blue Value definitely makes our list of top multipurpose sires, as the bulls were well received and the females are great cows.

475 MEAD RUSHMORE V140

BD:	01-19-2021	Bull M958990	Tattoo: V140
LT RUSHMORE 8060 PLD	LT RIO BRAVO 3181 P	LT RIO BLANCO 1234 P	LT 7N OF DUKE 9083 PLD
M760665	LT BRENDA'S EASE 3055 PLD	LT UNLIMITED EASE 9108	LT BRENDA 1014 PLD
	SMR WALDORF 83W PLD	FARAWAY CHICO 4T LD ET	FARAWAY MS SUPREME 235 PLD ET
MEAD HAILEE N155 TW	MEAD HAILEE J827	LT EASY PRO 1158 PLD	MEAD HAILEE G512 P
F1201288			

CED	BEPD	WEPD	YEPD	SC	MILK	CW	MARB	RE	TSI
+11.8	-3.5	+40	+76	+0.60	+40	+4	+0.19	+0.45	+225.47
BW	ADJ 205	ADJ 365	HP HT	ADJ SC	%IMF	UREA			
90	104	674	100	1101	100	52.1	36.90	1.45	100

• Direct son of maternal Legend Lt Rushmore 8060. Double digit CED with top 1% milk. Homozygous horned.

476 MEAD AFFINITY U1220

BD:	08-10-2020	Bull M953960	Tattoo: U1220
LT AFFINITY 6221 PLD	LT RUSHMORE 8060 PLD	LT RIO BRAVO 3181 P	LT BRENDA'S EASE 3055 PLD
M880381	LT ATHENA 1247	WINN MANS LANZA 6105	SILVER ATHENA 7123 P
	WC BOOTLEGGERS 4017 P	LT LONG DISTANCE 9001 PLD	WC RITA 1534 P
MEAD S1695 OF 4017 M647	MEAD MISS CROCUS M647	LT LONG DISTANCE 9001 PLD	MEAD MISS CROCUS K667
F1271905			

CED	BEPD	WEPD	YEPD	SC	MILK	CW	MARB	RE	TSI
+9.0	-2.9	+53	+87	+0.50	+18	+2	+0.24	+0.39	+232.93
BW	ADJ 205	ADJ 365	HP HT	ADJ SC	%IMF	UREA			
80	105	617	99	1081	92	50.5	34.54	3.44	115

• Starting with the fall 2020 calf crop all the Charolais bulls are parent verified and carry Genomic Enhanced EPDs. We did this to allow our customers more predictability in their genetic decisions. We also test for horned status. Heterozygous Polled.

477 MEAD FINAL CHOICE V896

BD:	1-31-2021	Bull	Tattoo: V896
S A V Final Answer 0035	S A V Emulous 8145		
MEAD Final Choice L239	S A V Emulous 8145		
17315700	MEAD Juana H168		
	MEAD Ledger N413		
	MEAD Commercial S250		
	MEAD Commercial K401		

BW	ADJ 205	ADJ 365	ADJ HP HT	ADJ SC
98	109	720	122	1310
				120
				51.2
				33.7

• Charolais X Angus. Lot 478 is a direct son of Final Choice raised by a young "chocolate" recip. As mentioned many times before we are big fans of the Charolais/Angus cross.

Non-Parent Bulls Spring 2022 Breed Averages

CED	BW	WW	YW	Milk	MCE	MTL	SC	CW	RE	Fat	Marb	TSI
+5.8	-0.4	+57.3	+104.1	+22.8	+5.4	+51.5	+0.9	+21.4	+0.71	+0.009	+0.11	+247.50

BULL & FEMALE PRODUCTION SALE

Noon • Saturday, May 7, 2022

Held at the Mead Sale Headquarters • Versailles, MO

GPS Address: 7785 Hwy 52, Versailles, MO 65084

SALE LOCATION

The Mead Sale Headquarters is located 4 miles West of Versailles, MO on Hwy 52 and on the North side of the road. GPS address: 7785 Hwy 52, Versailles, MO 65084.



AUCTIONEER:

Jerry Lehmann (573) 999-4759

RINGMEN:

Brett Sayre (573) 881-1876
Don Birk..... (417) 860-8595
Austin Sorensen..... (712) 310-3788
Jordan Hunter (417) 224-6296

HERD HEALTH:

All the cattle selling will be accompanied with proper health certificates for immediate shipment and the bulls have all been semen checked and have passed a BSE.

ACCOMMODATIONS

Super 8, 10 Midway Road,
Eldon, MO (573) 392-2100
Best Western State Fair Inn, 3120 S Limit Ave,
Sedalia, MO (660) 826-6100
Holiday Inn Express, 4533 Osage Beach Pkwy,
Osage Beach, MO (573) 302-0330
Best Western Plus Capital Inn, 1937 Christy Dr,
Jefferson City, MO (573) 635-4175

AIRPORTS

Eldon Model Airpark, Eldon, MO
Sedalia Regional Airport, Sedalia, MO

Please don't hesitate to contact Jennifer at (573) 721-5512 to assist in transportation.

LIABILITY

Mead Farms assumes no liability for accidents or injuries that occur on sale premises.

TERMS AND CONDITIONS:

Cattle will sell under the suggested Terms and Conditions of the American Angus Association (http://www.angus.org/Pub/suggested_sale_terms.pdf).

TRUCKING:

Mead Farms will assist in making trucking arrangements for any of your bull purchases.

FOOD AND REFRESHMENTS:

A complimentary lunch will be served at 11 AM.

MISSOURI ANGUS ASSOCIATION

Julie Conover (734) 260-8635



EPDs contained in the hard copy of this sale book were current as of print date. Digital versions of this sale book can be viewed online at www.angus.org and will have EPDs updated every Friday with the exception of EPD references in footnotes and photos. Any PDF downloads from the website will contain EPDs current as of the date downloaded. References: American Angus Association®, AHIR®, AngusSource®, CAB®, Pathfinder®.



21658 Quarry Lane
Barnett, MO 65011

PRSRT
FIRST-CLASS
U.S. POSTAGE
PAID
St. Joseph, MO
Permit #2017

80th Anniversary

MEAD FARMS

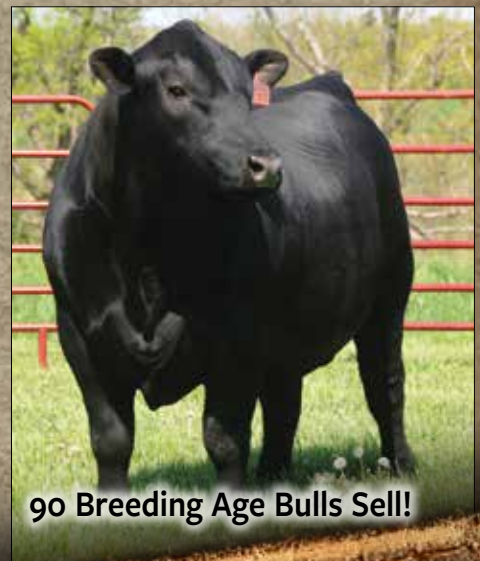
ALL BREEDS

BULL & FEMALE PRODUCTION SALE

Missouri's #1 Pathfinder Program



Spring cow-calf pairs, spring bred heifers,
fall bred heifers, and fall bred cows sell!



90 Breeding Age Bulls Sell!

Saturday • Noon

May 7, 2022

At the Mead Sale Headquarters • Versailles, MO